

# Ladybugs e-Award *with Shelley*



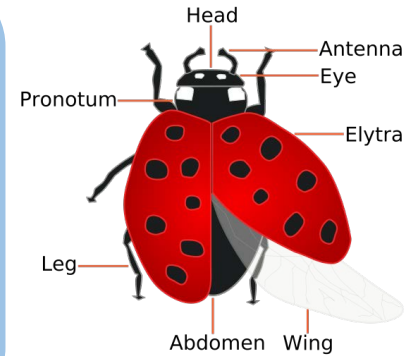
1. Learn about the ladybug. What are the characteristics of the ladybug?

Ladybugs are a type of beetle, they have six short legs and two antennae.

A ladybug beats it's wings 85 times a second when it flies and their top flying speed is about 24 kilometers per hour.

The male ladybug is usually smaller than the female. A female ladybug will lay over 1000 eggs in her lifetime. The spots on a lady bug fade as the ladybug gets older.

Aphids are a ladybugs favourite food, that makes them good for your garden. Ladybugs chew from side to side and not up and down like us.



Name two other common names of Ladybugs: \_\_\_\_\_

What do Ladybugs do during the winter? (Circle the correct answer)

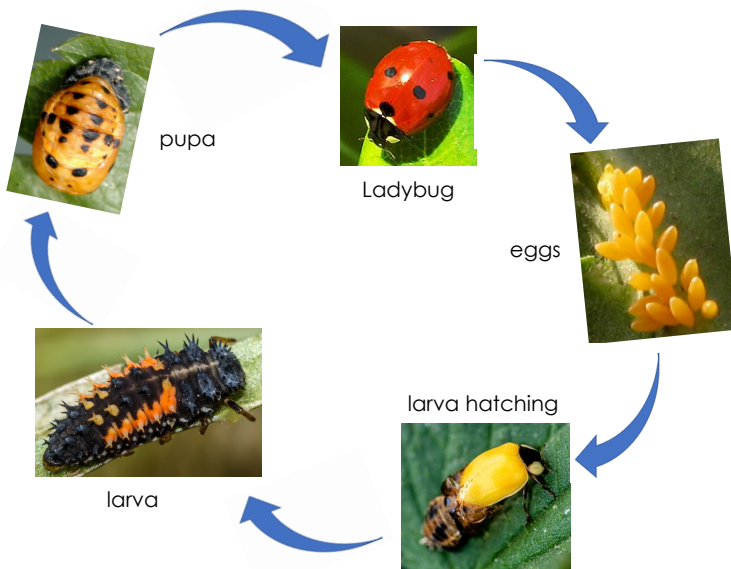
hibernate

fly around

Circle True or False:

|  |      |       |
|--|------|-------|
| Ladybugs are female                          | true | false |
| ladybugs are always red                      | true | false |
| ladybugs can have spots, stripes or be solid | true | false |

2. Describe the life cycle of the ladybug. Make a poster. (see page 2)



The female will lay 3-20 football shaped orange eggs in a circular cluster on the underside of leaves. Eggs are not visible to the naked eye. In 2-5 days, the eggs turn into larva and consume up to 400 aphids in 21 days. They next turn into a pupa. After 2-5 days the adults come out and continue to eat.

3. Are all ladybugs red? Explain.



There are four common garden species of ladybird in Australia. The common spotted ladybird is bright orange with black dots on its back. There are over 5000 different kinds of ladybugs worldwide

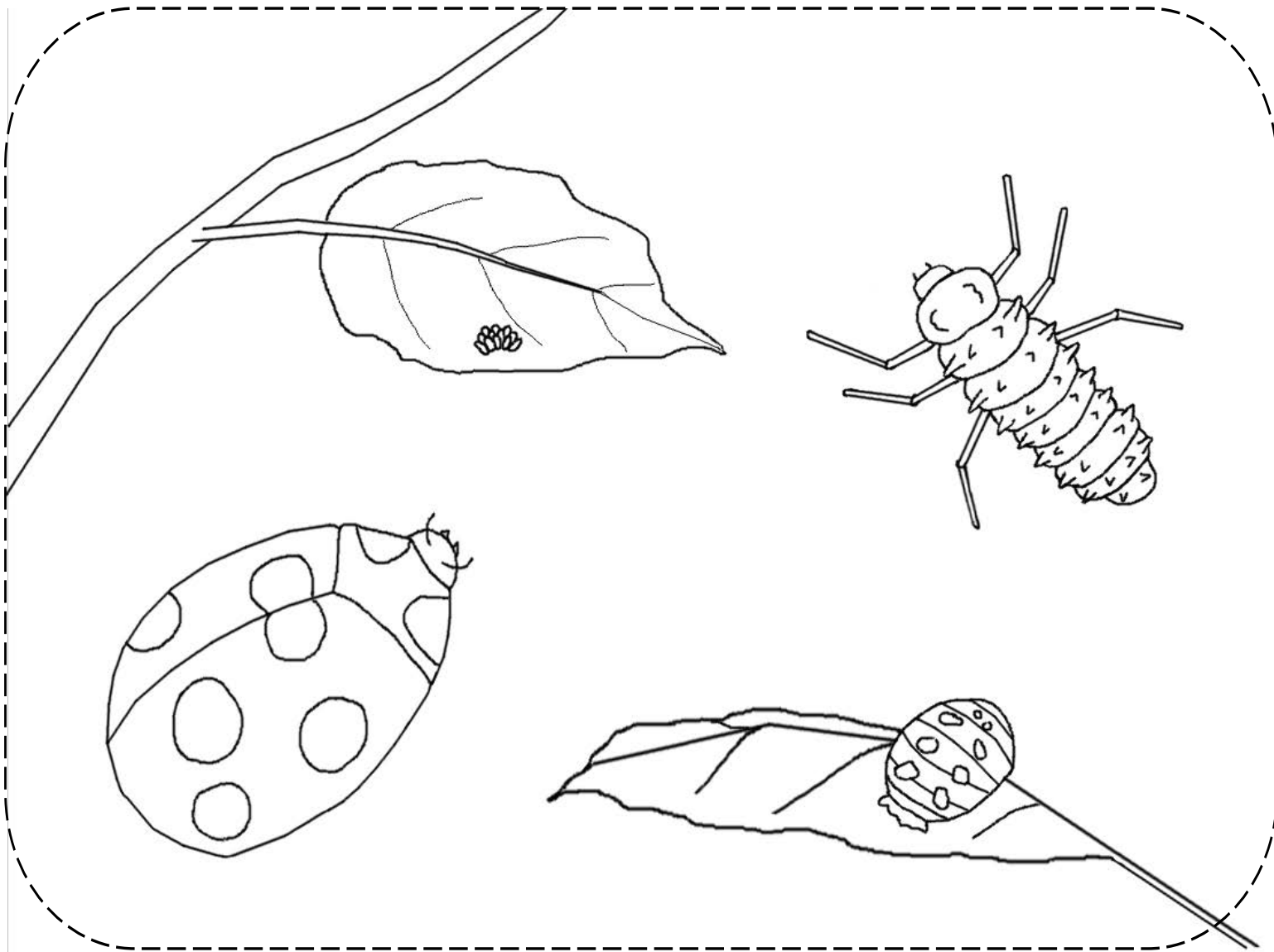


4. Make two ladybug pet rocks. Give one away.



2. Describe the life cycle of the ladybug. Make a poster.

*Colour the below lifecycle of the Ladybug and label them or draw your own and glue it here*



*lifecycle drawing by StuwahaCreations*



*Glue a photo of your ladybug pet rock below*



**Ladybugs e-Award**

all images in the worksheets have been credited to the artists, click on the images for the links.